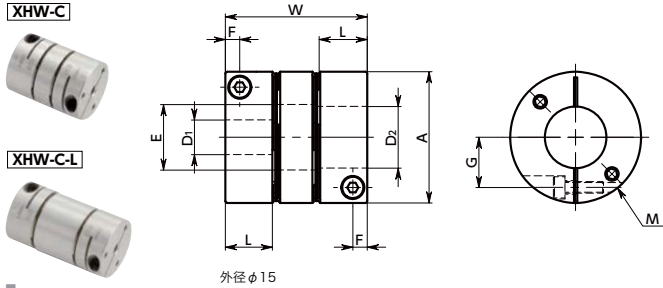
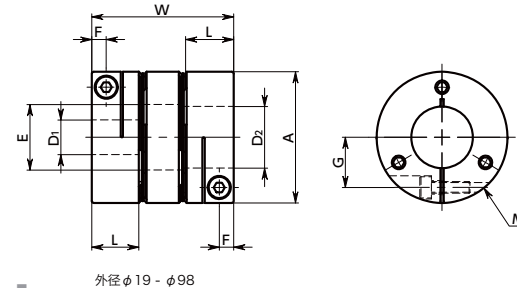


# XHW-C/XHW-C-L 挠性联轴器 - 膜片型 规格增加

WEB 选型指南 | CAD Download | 0 零背隙 | 高扭矩 | 高刚性



外径 φ15



外径 φ19 - φ98

## 尺寸

单位: mm

型号	A	L	W	E	F	G	M	螺丝紧固扭矩 (N·m)
XHW-15C	15	7.5	21.6	6.3	2.1	5	M2	0.45
XHW-19C	19	9.2	25.7	8.5	2.6	7	M2	0.5
XHW-25C	25	11	32.2	12.5	3.3	9.25	M2.5	1
XHW-27C	27	11	32.2	14.5	3.3	10.25	M2.5	1
XHW-34C	34	12.5	36.8	16.5	3.75	13	M3	1.5
XHW-39C	39	15.5	46.6	20.5	4.5	14.5	M4	3.5
XHW-44C	44	15.5	46.6	22.5	4.5	17	M4	3.5
XHW-56C	56	20.5	61.2	28.5	6	21	M5	8
XHW-64C	64	24	74.4	36	7	24	M6	13
XHW-79C	79	30	97.2	43	8.75	29	M8	28
XHW-98C	98	32	104	51	8.7	38	M8	28
XHW-19C-L	19	9.2	34	8.5	2.6	7	M2	0.5
XHW-25C-L	25	11	42	12.5	3.3	9.25	M2.5	1
XHW-27C-L	27	11	42	14.5	3.3	10.25	M2.5	1
XHW-34C-L	34	12.5	44	16.5	3.75	13	M3	1.5
XHW-39C-L	39	15.5	55	20.5	4.5	14.5	M4	3.5

型号	标准轴孔径																												
	D1, D2	3	4	5	6	6.35	8	9.525	10	11	12	14	15	16	17	18	19	20	22	24	25	28	30	32	35	38	40	42	45
XHW-15C	●	●	●	●	●																								
XHW-19C	●	●	●	●	●	●																							
XHW-25C	●	●	●	●	●	●	●																						
XHW-27C	●	●	●	●	●	●	●	●																					
XHW-34C	●	●	●	●	●	●	●	●	●																				
XHW-39C	●	●	●	●	●	●	●	●	●	●																			
XHW-44C	●	●	●	●	●	●	●	●	●	●	●																		
XHW-56C	●	●	●	●	●	●	●	●	●	●	●	●	●																
XHW-64C	●	●	●	●	●	●	●	●	●	●	●	●	●	●	●														
XHW-79C	●	●	●	●	●	●	●	●	●	●	●	●	●	●	●	●	●												
XHW-98C	●	●	●	●	●	●	●	●	●	●	●	●	●	●	●	●	●	●	●										
XHW-19C-L	●	●	●	●	●	●																							
XHW-25C-L	●	●	●	●	●	●	●																						
XHW-27C-L	●	●	●	●	●	●	●	●																					
XHW-34C-L	●	●	●	●	●	●	●	●	●																				
XHW-39C-L	●	●	●	●	●	●	●	●	●	●																			

- 所有产品均附带内六角止动螺丝。
- 适用轴径的推荐尺寸公差为h6及h7。
- 安装到D型切口轴时, 请注意轴的D型切口面的位置。→ P.284

轴孔·键槽追加加工 → P.952 | 无尘洗净·无尘包装 → P.956 | 变更为不锈钢螺丝 → P.954

## 性能

型号	最大轴孔径 (mm)	额定扭矩*1 (N·m)	最大扭矩*1 (N·m)	最高转速 (min <sup>-1</sup> )	惯性力矩*2 (kg·m <sup>2</sup> )	静扭转刚性 (N·m/rad)	容许偏心 (mm)	容许偏角 (°)	容许轴向偏差 (mm)	质量*2 (g)
XHW-15C	6	0.6	1.2	42000	3.0×10 <sup>-7</sup>	100	0.1	1.4	±0.2	9.4
XHW-19C	8	1.5	3	33000	8.8×10 <sup>-7</sup>	300	0.12	2	±0.2	17
XHW-25C	12	3	6	25000	3.4×10 <sup>-6</sup>	1000	0.15	2	±0.3	35
XHW-27C	14	3.3	6.6	23000	4.4×10 <sup>-6</sup>	1400	0.15	2	±0.4	39
XHW-34C	16	6.3	12.6	18000	1.3×10 <sup>-5</sup>	2500	0.2	2	±0.5	75
XHW-39C	20	12	24	16000	2.9×10 <sup>-5</sup>	4700	0.25	2	±0.5	123
XHW-44C	22	15	30	14000	4.7×10 <sup>-5</sup>	6400	0.25	2	±0.6	156
XHW-56C	28	37.5	75	11000	1.7×10 <sup>-4</sup>	12000	0.3	2	±0.7	340
XHW-64C	35	50	100	9800	3.3×10 <sup>-4</sup>	15000	0.35	2	±0.9	490
XHW-79C	42	100	200	7900	1.0×10 <sup>-3</sup>	22000	0.5	2	±1.1	1100
XHW-98C	50	280	4700	6400	2.6×10 <sup>-3</sup>	47000	0.5	2	±1.3	1740
XHW-19C-L	8	1.5	3	33000	1.2×10 <sup>-6</sup>	300	0.25	2	±0.2	22
XHW-25C-L	12	3	6	25000	4.3×10 <sup>-6</sup>	1000	0.3	2	±0.3	45
XHW-27C-L	14	3.3	6.6	23000	5.8×10 <sup>-6</sup>	1400	0.3	2	±0.4	50
XHW-34C-L	16	6.3	12.6	18000	1.6×10 <sup>-5</sup>	2500	0.3	2	±0.5	89
XHW-39C-L	20	12	24	16000	3.4×10 <sup>-5</sup>	4700	0.4	2	±0.5	144

\*1: 无需根据负荷变化修正额定扭矩和最大扭矩。  
\*2: 最大轴孔径时的值。

## ● 型号指定

**XHW-25C-L-8-10**

